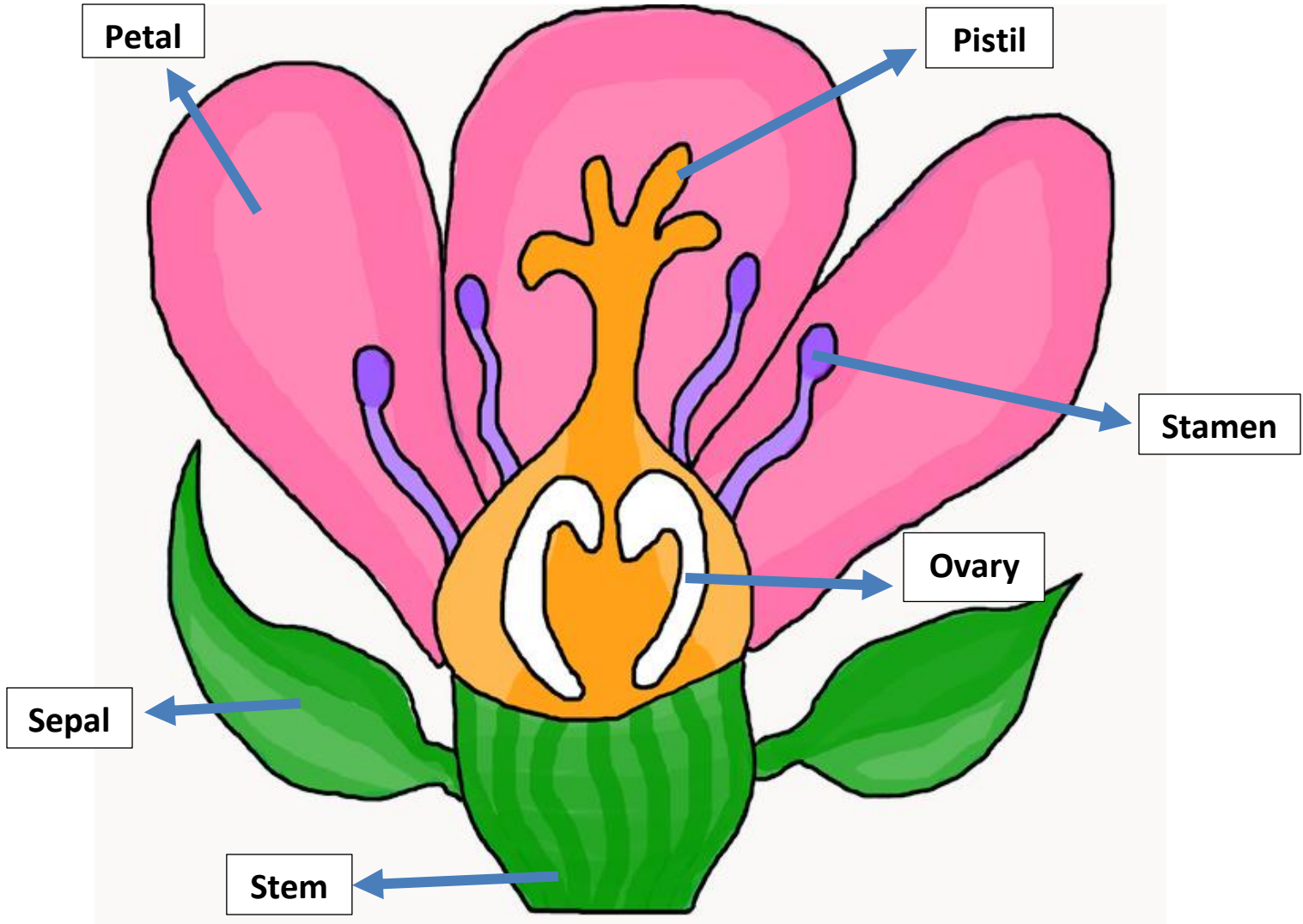


# Anatomy of a Flower

These are different parts of a flower.



Find a picture of a flower or a live flower and take a closer look: How many different parts of the flower can you see?

Try drawing your flower and writing the names for the flower parts on your drawing.



# Terminology

**Flower:** A special part of a plant where seeds are made. Flowers are often colourful and can be a single flower or a bunch of flowers. Not all plants need to grow flowers.

**Ovary:** The enlarged part of the pistil. The ovary is where the young seeds develop.

**Petal:** A floral leaf of a flower. The petals are often very colourful and are delicate. Collectively, petals are known as a corolla.

**Pistil:** The seed bearing part of a flower.

**Pollen:** A fine powder that can fertilize plants, which then create seeds. Pollen is moved from plant to plant by wind, insects (like bees), and other animals.

**Sepal:** The leaf-like outer part of a flower. The sepals help protect and support the petals. Sepals are often green.

**Stamen:** The part of the plant that has pollen.

**Stem:** The stalk that supports leaves and flowers of a plant.